

Client: Peptide Partners
zak@pirsek.com
www.peptide.partners

Sample received: **09/12/25**
Analysis conducted: **09/19/25**

Compound:	Humanin	CAS:	330936-69-1
Batch/Lot #:	HP20250805	Formula:	C119H204N34O32S2
Appearance:	Lyophilized white powder	Mol Wt:	2687.27 g/mol

Method: Qualitative and Quantitative chemical analysis by Ultra High Performance Liquid Chromatography with Mass Spectrometry

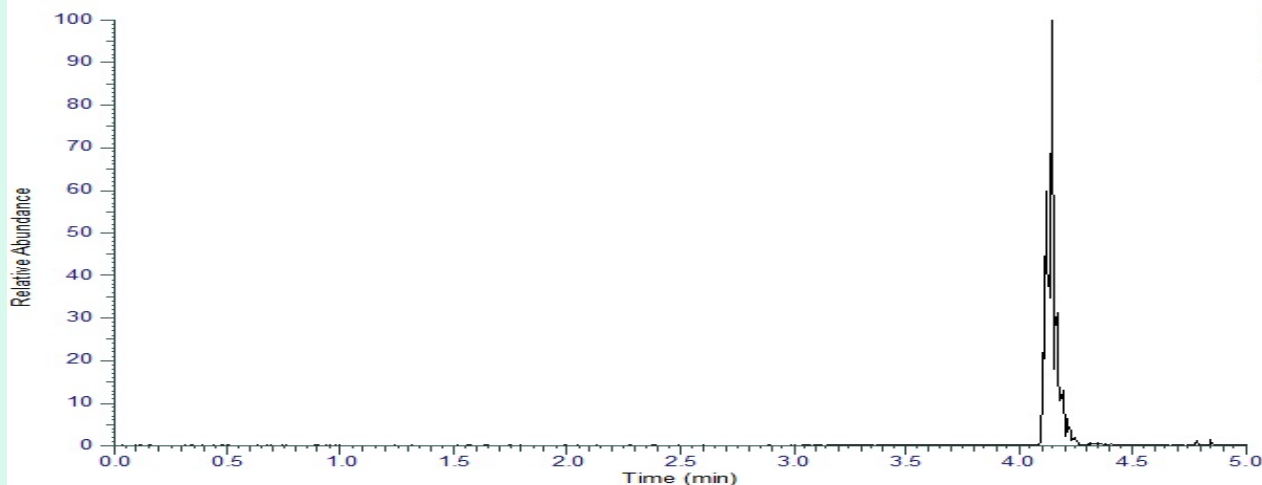
Pubchem CID: 16131438

Humanin | C119H204N34O32S2 | 16131438 CID

	Specification	Result	
Identity Test:	Humanin	Humanin	Conforms
Purity:	>99%	99.92%	Conforms

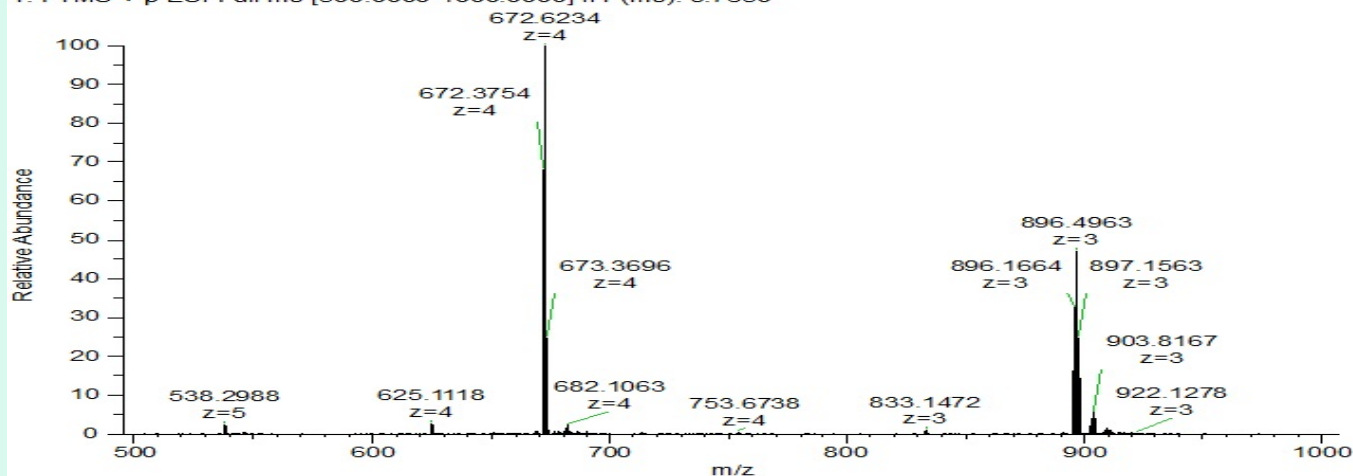
LC-MS Chromatogram: Retention Time and Peak Analysis

RT :0.00-5.01



Full Scan Mass Spectrometry Analysis

PeptidePartners-Humanin-02 #496 RT: 4.13 AV: 1 NL: 1.12E8
T: FTMS + p ESI Full ms [500.0000-1000.0000] IIT (ms): 9.7650



Analysis Performed by

Dr. Roberto Marin
Analytical Chemist
contact@bioregen.com

Roberto Marin

COA #11023
Security Key **PEPPART901**
bioregen.com/verify

