

Client: Peptide Partners
zak@pirsek.com
www.peptide.partners

Sample received: **09/12/25**
Analysis conducted: **09/19/25**

Compound:	MOTS-c	CAS:	1627580-64-6
Batch/Lot #:	YC20250807	Formula:	C101H152N28O22S2
Appearance:	White lyophilized powder	Mol Wt:	2174.64 g/mol

Method: Qualitative and Quantitative chemical analysis by Ultra High Performance Liquid Chromatography with Mass Spectrometry

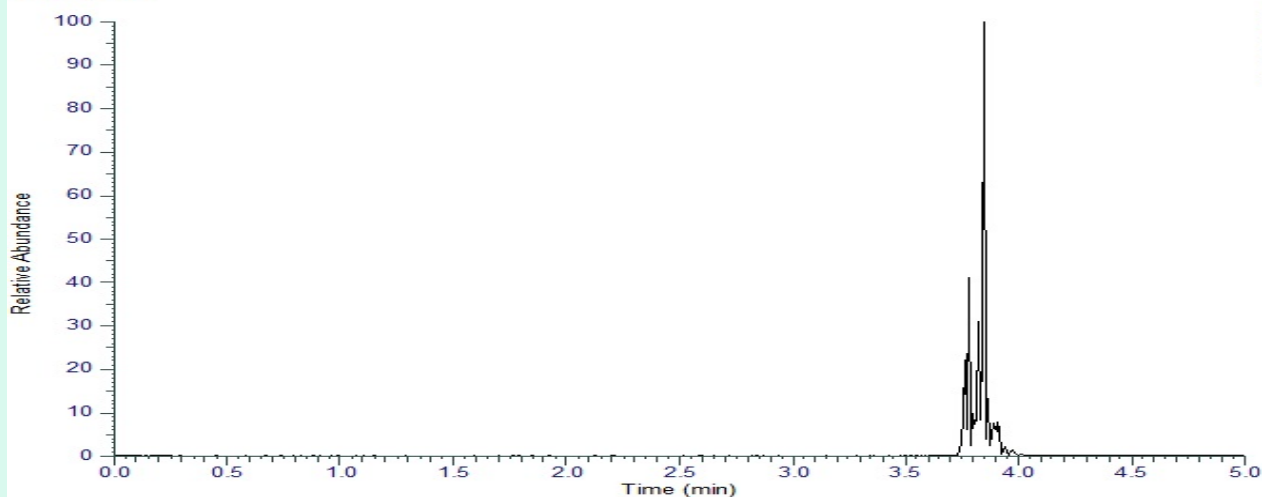
Pubchem CID: 155885767

MOTS-c | C101H152N28O22S2 | CID 155885767

	Specification	Result	
Identity Test:	MOTS-c	MOTS-c	Conforms
Quantity:	10 mg \pm 15%	9.76 mg	Conforms
Purity:	>99%	99.87%	Conforms

LC-MS Chromatogram: Retention Time and Peak Analysis

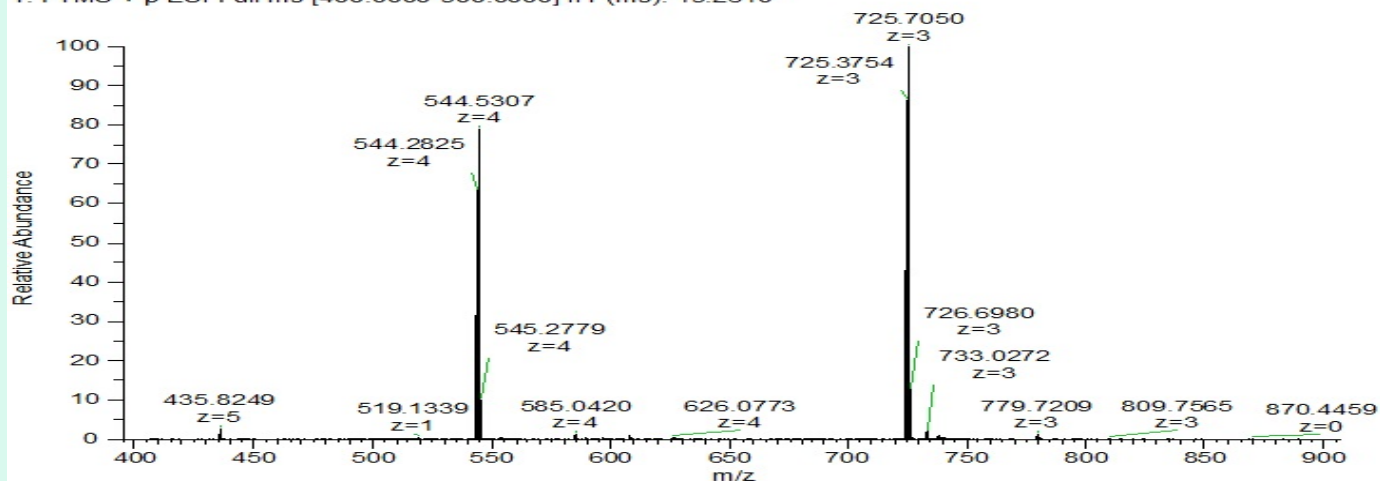
RT : 0.00-5.00



NL: 1.18E8
m/z= 544.5280-
544.5334 MS
PeptidePartners-
MOTS-C-02

Full Scan Mass Spectrometry Analysis

PeptidePartners-MOTS-C-02 #441 RT: 3.84 AV: 1 NL: 3.84E7
T: FTMS + p ESI Full ms [400.0000-900.0000] IIT (ms): 19.2610



Analysis Performed by

Dr. Roberto Marin
Analytical Chemist
contact@bioregen.com

Roberto Marin

COA #11024
Security Key **PEPPART901**
bioregen.com/verify

