

Client: Peptide Partners
zak@pirsek.com
www.peptide.partners

Sample received: **09/12/25**
Analysis conducted: **09/19/25**

| | | | |
|--------------|--------------------------|----------|-------------|
| Compound: | SS-31 | CAS: | 736992-21-5 |
| Batch/Lot #: | SY20250806 | Formula: | C32H49N9O5 |
| Appearance: | White lyophilized powder | Mol Wt: | 639.8 g/mol |

Method: Qualitative and Quantitative chemical analysis by Ultra High Performance Liquid Chromatography with Mass Spectrometry

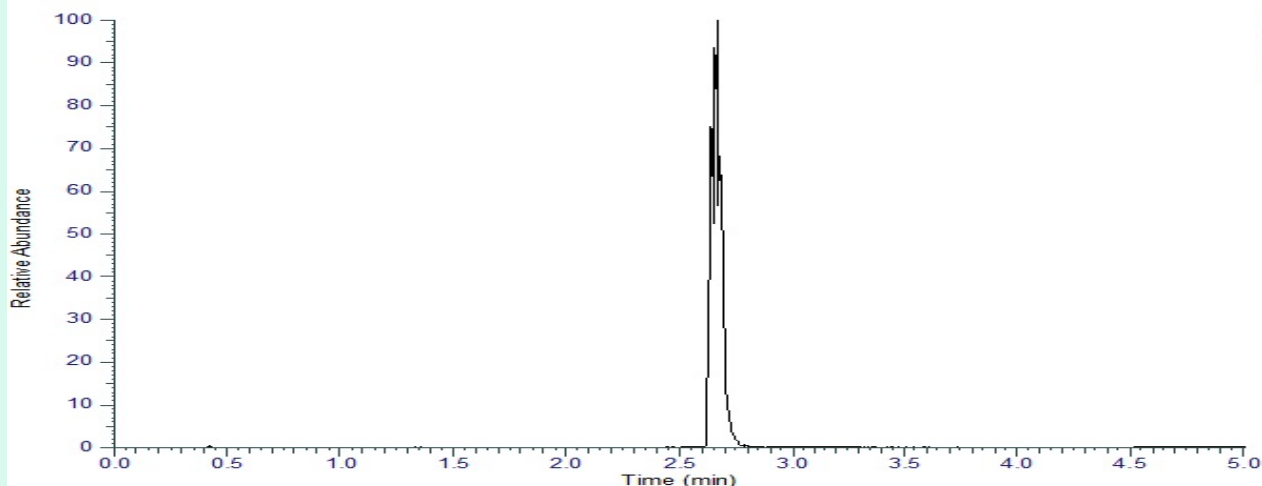
Pubchem CID: 11764719

SS-31 | C32H49N9O5 | CID 11764719

| | Specification | Result | |
|----------------|---------------|---------------|-----------------|
| Identity Test: | SS-31 | SS-31 | Conforms |
| Purity: | >99% | 99.70% | Conforms |

LC-MS Chromatogram: Retention Time and Peak Analysis

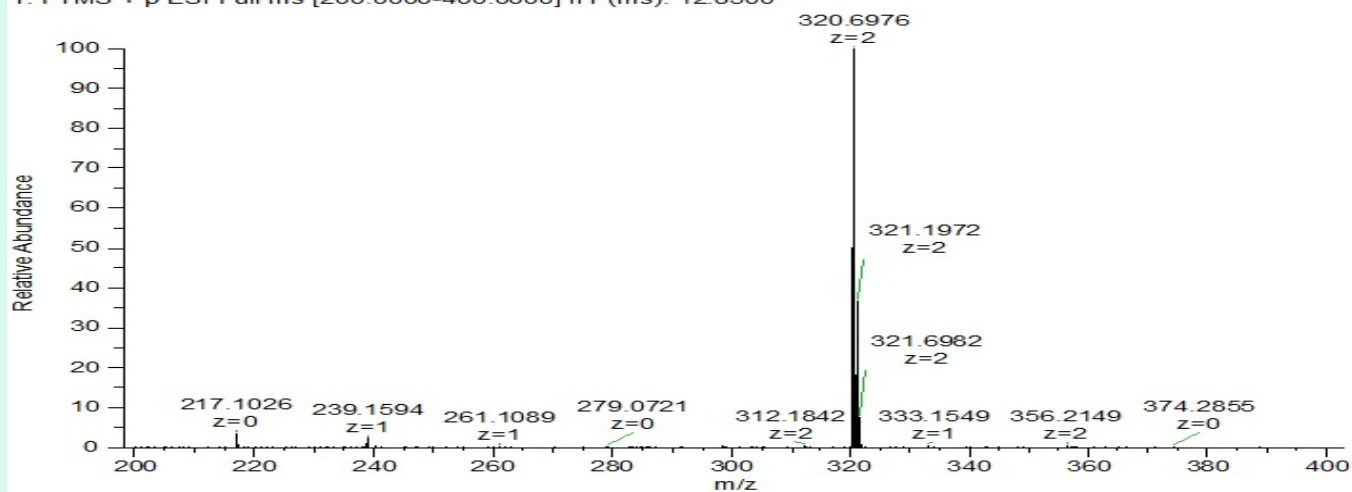
RT :0.00-5.01



NL: 1.26E8
m/z= 320.0959
320.0991 MS
PeptidePartners-
SS-31-02

Full Scan Mass Spectrometry Analysis

PeptidePartners-SS-31-02 #425 RT: 2.65 AV: 1 NL: 6.62E7
T: FTMS + p ESI Full ms [200.0000-400.0000] IIT (ms): 12.8500



Analysis Performed by

Dr. Roberto Marin
Analytical Chemist
contact@bioregen.com

Roberto Marin

COA #11025
Security Key **PEPPART901**
bioregen.com/verify

