

**Client: Peptide Partners**  
zak@pirsek.com  
www.peptide.partners

Sample received: **07/29/25**  
Analysis conducted: **08/09/25**

Compound:	GHK-Cu	CAS:	89030-95-5
Batch/Lot #:	CU20250717	Formula:	C14H23CuN6O4
Appearance:	Blue lyophilized powder	Mol Wt:	340.384 g/mol

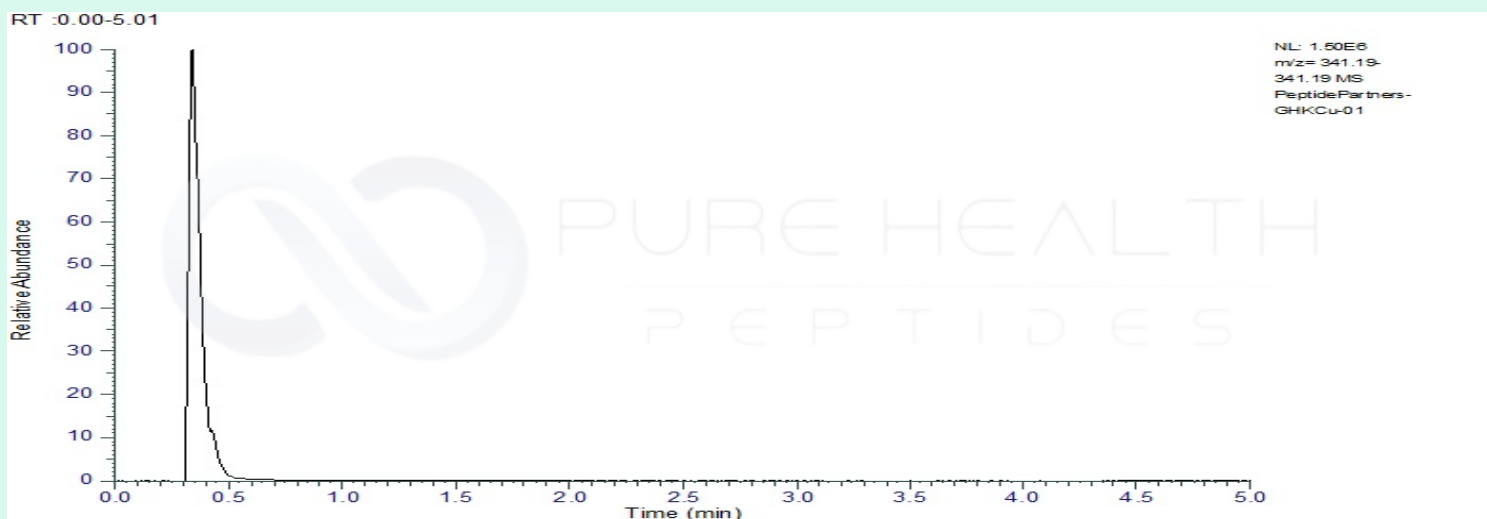
**Method:** Qualitative and Quantitative chemical analysis by Ultra High Performance Liquid Chromatography with Mass Spectrometry

**Pubchem CID:** 378611

GHK Copper | C14H23CuN6O4 | CID 378611

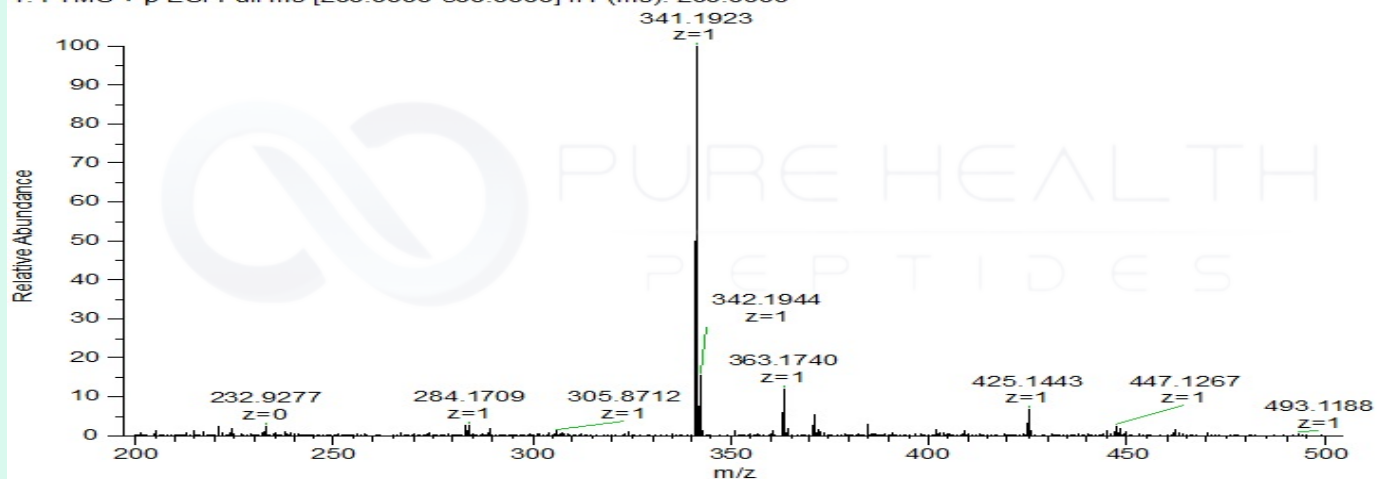
	Specification	Result	
Identity Test:	GHK Copper	<b>GHK Copper</b>	<b>Conforms</b>
Quantity:	100mg $\pm$ 15%	128.8 mg	<b>Conforms</b>
Purity:	>98%	<b>99.73%</b>	<b>Conforms</b>

### LC-MS Chromatogram: Retention Time and Peak Analysis

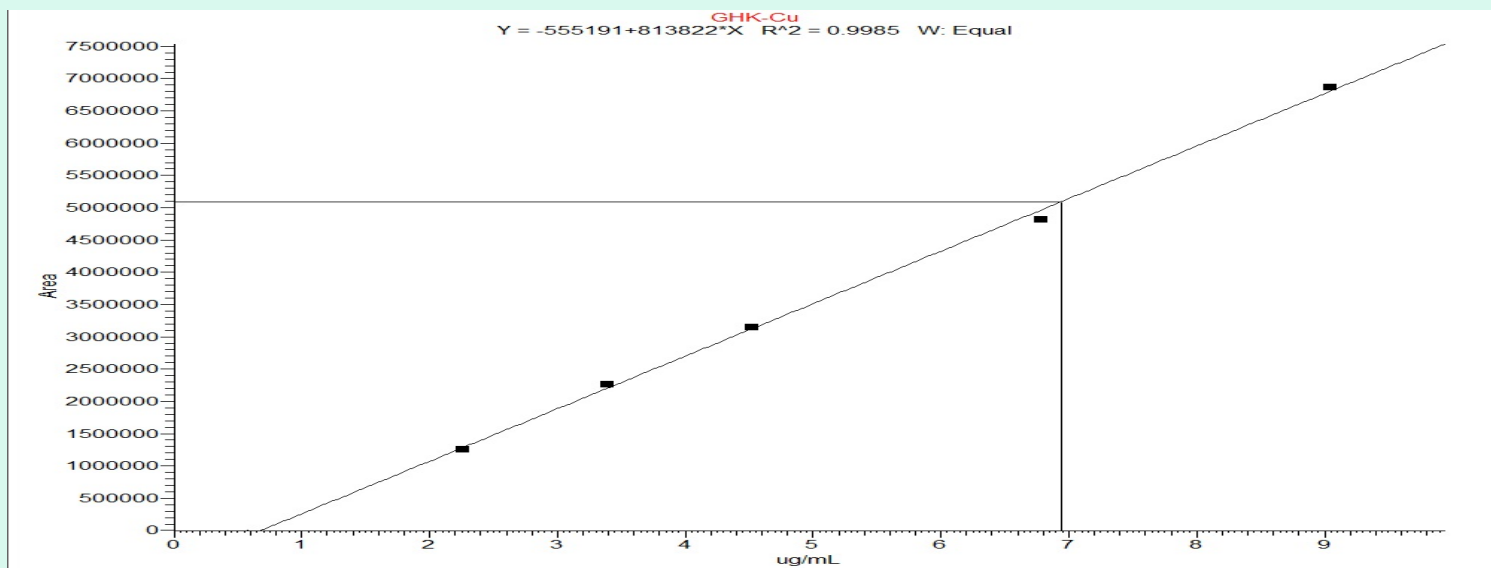


## Full Scan Mass Spectrometry Analysis

PeptidePartners-GHKCu-01 #42 RT: 0.35 AV: 1 NL: 1.48E6  
T: FTMS + p ESI Full ms [200.0000-500.0000] IIT (ms): 200.0000



## Calibration Curve



### Analysis Performed by

Dr. Roberto Marin  
Analytical Chemist  
contact@bioregen.com

*Roberto Marin*

COA #10796  
Security Key **PEPPART901**  
bioregen.com/verify

