

Client: Peptide Partners
zak@pirsek.com
www.peptide.partners

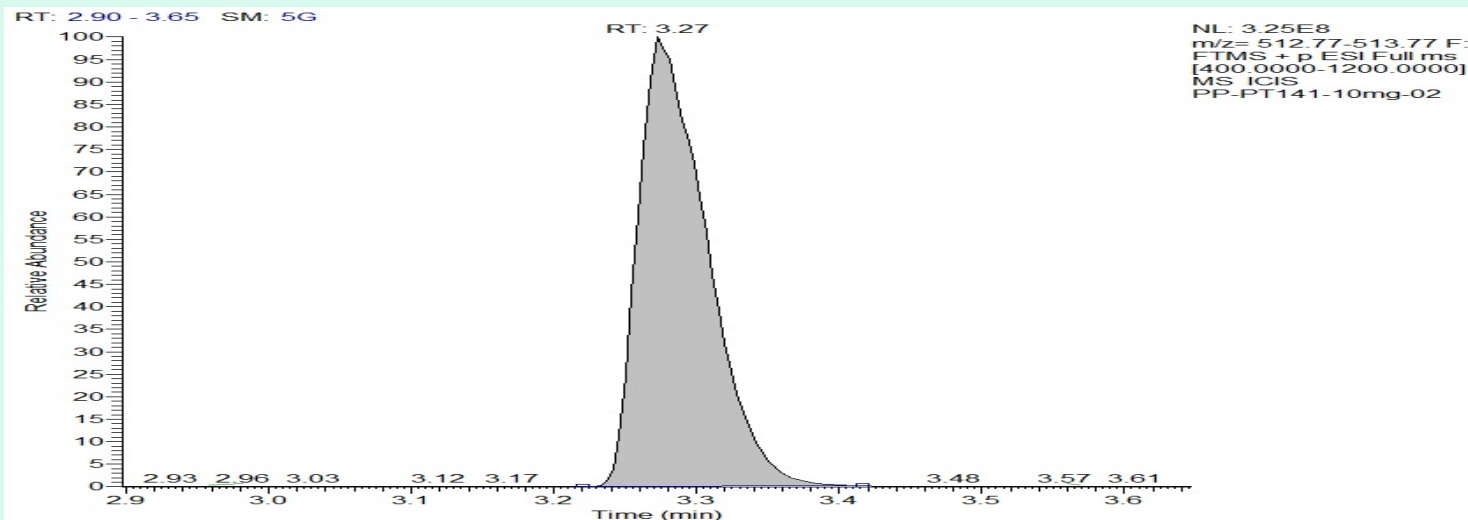
Sample received: **12/29/25**
Analysis conducted: **01/12/26**

Compound:	PT-141	CAS:	189691-06-3
Batch/Lot #:	PT202512	Formula:	C50H68N14O10
Appearance:	White lyophilized powder	Mol Wt:	1025.182 g/mol

Method: Qualitative and Quantitative chemical analysis by Ultra High Performance Liquid Chromatography with Mass Spectrometry
Pubchem CID: 9941379
[PT-141 | C50H68N14O10 | 9941379](#)

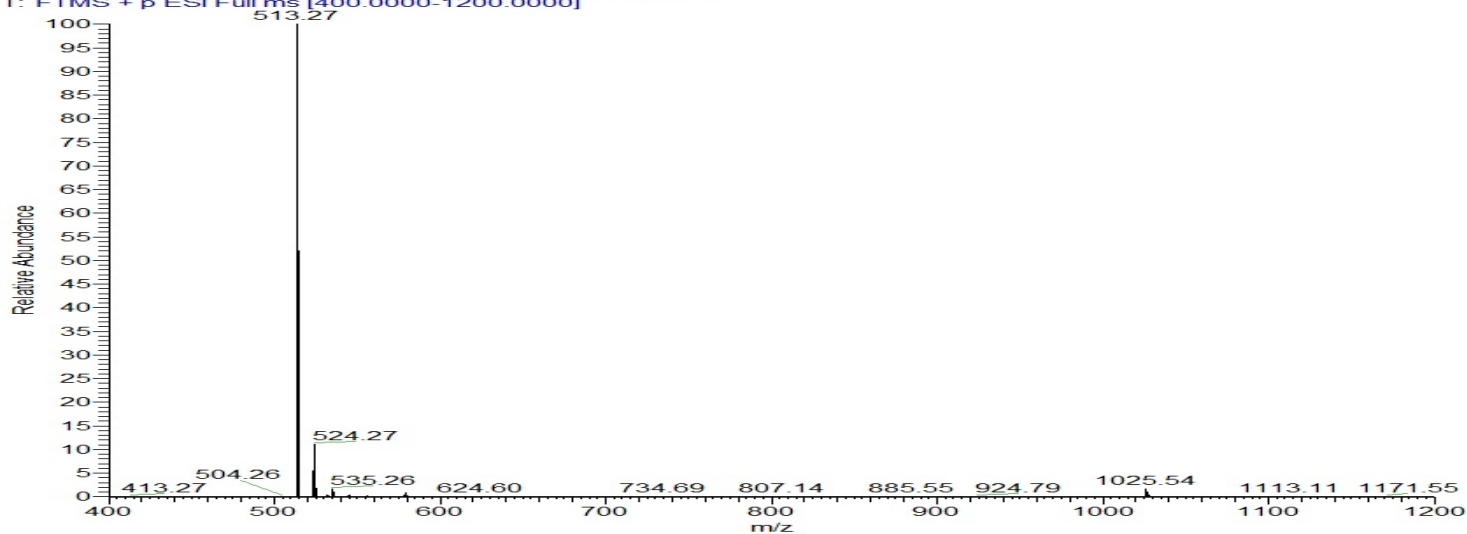
	Specification	Result	
Identity Test:	PT-141	PT-141	Conforms
Quantity:	10mg ± 15%	11.02 mg	Conforms
Purity:	>99%	99.89%	Conforms

LC-MS Chromatogram: Retention Time and Peak Analysis

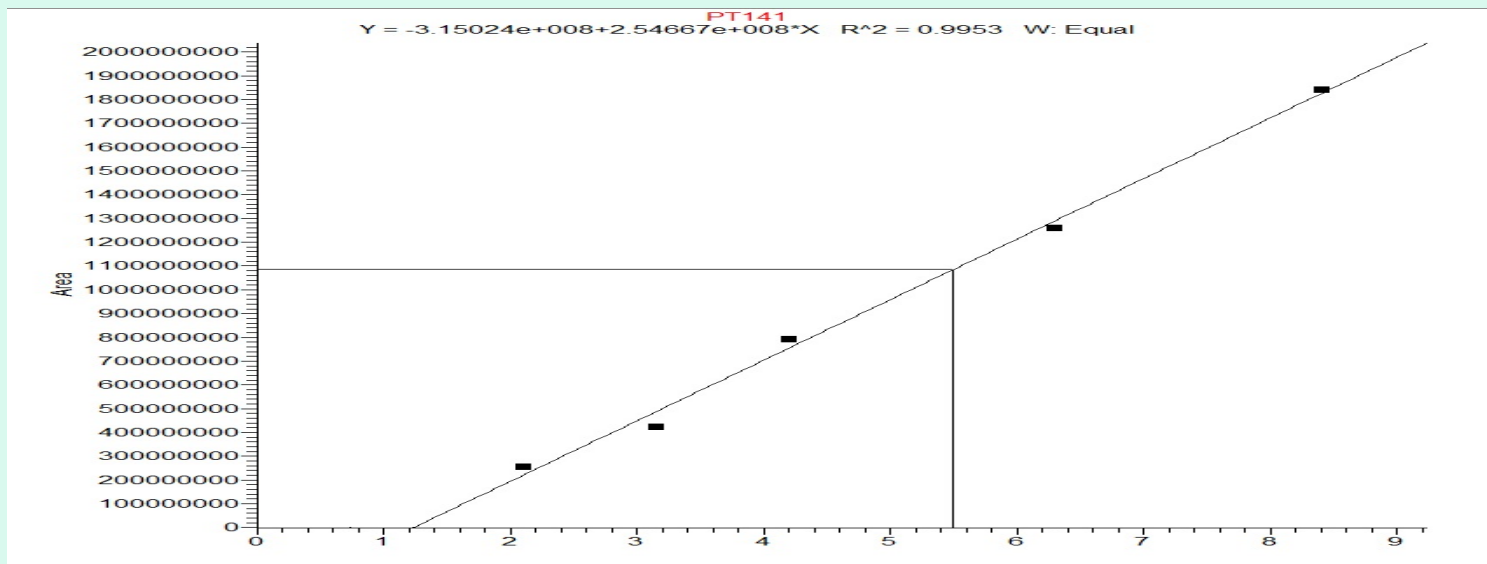


Full Scan Mass Spectrometry Analysis

PP-PT141-10mg-02 #750 RT: 3.27 AV: 1 NL: 3.35E8
T: FTMS + p ESI Full ms [400.0000-1200.0000]



Calibration Curve



Analysis Performed by

Victor Ugur
Analytical Chemist
contact@bioregen.com

COA #11838
Security Key **PEPPART901**
bioregen.com/verify



Victor Ugur